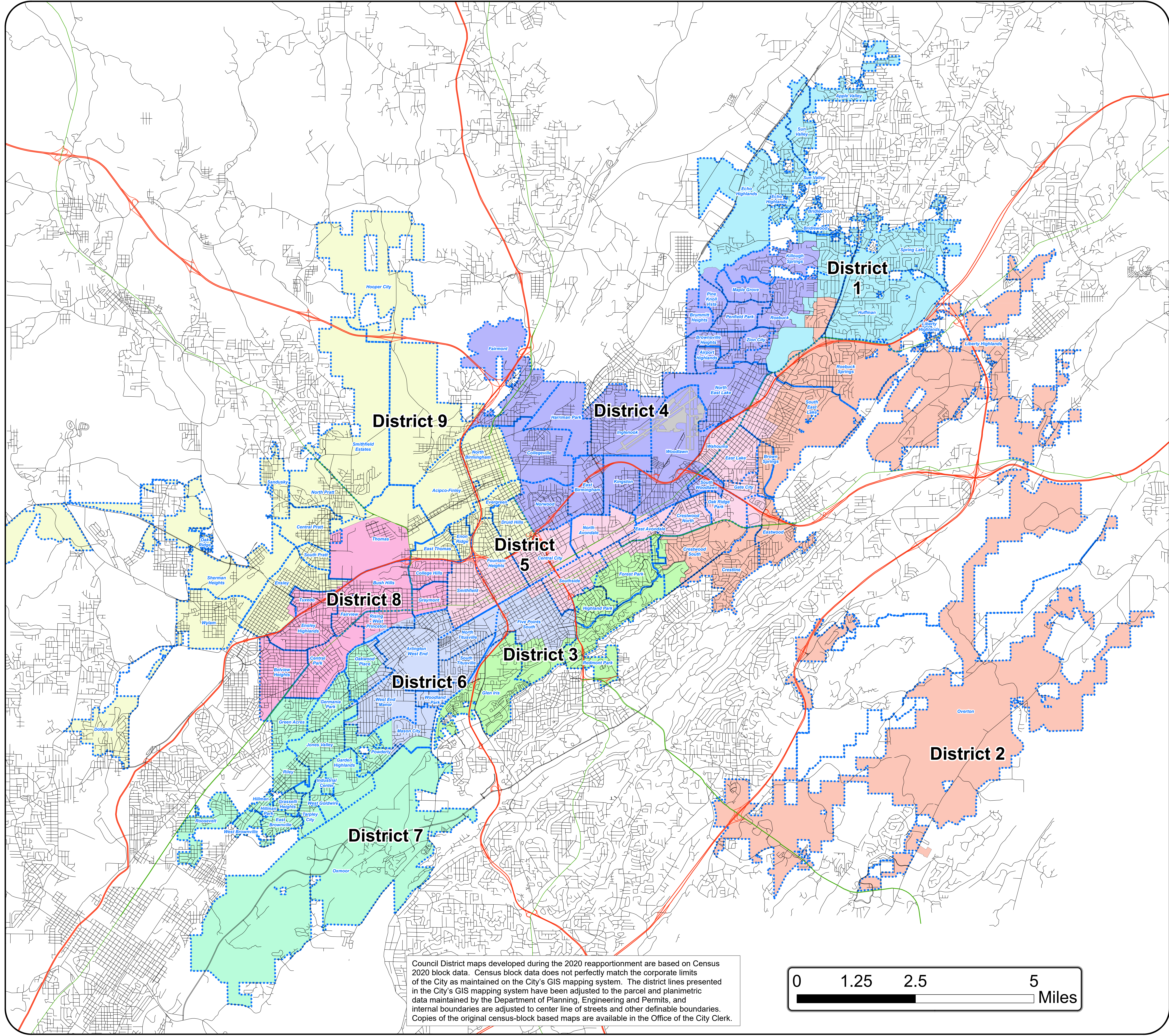




# Birmingham City Council Districts & Neighborhoods



**Legend**

- Limited Access
- Ramps
- US Highways
- Other Roads

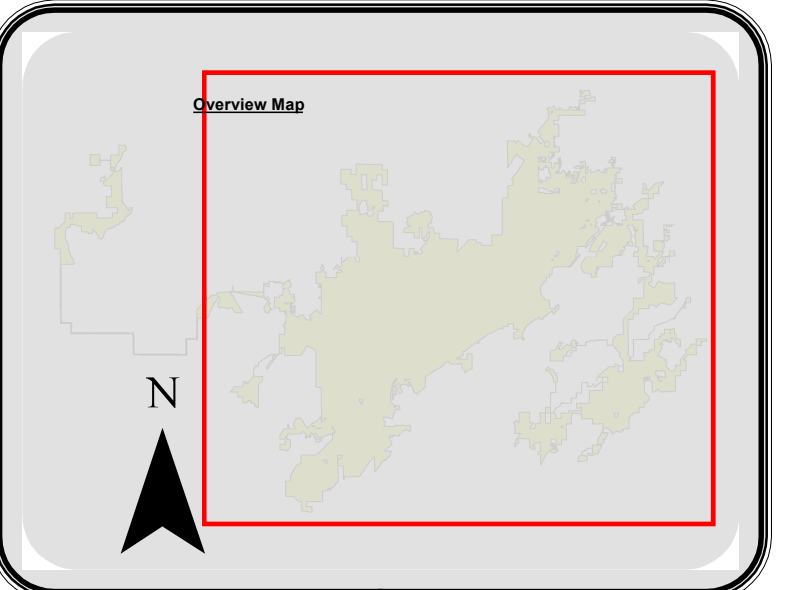
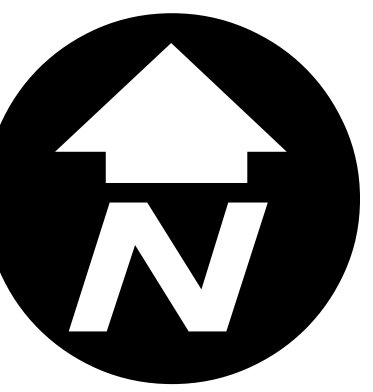
**Neighborhood**

- Neighborhood
- Airport

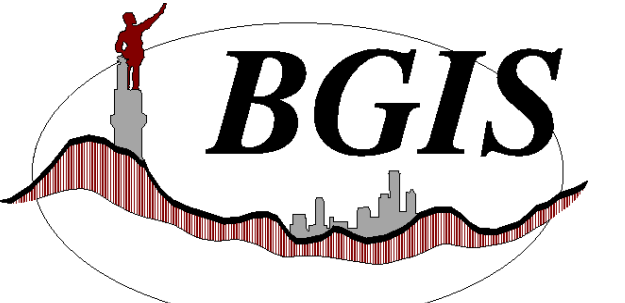
**District**

- 1
- 2
- 3
- 4
- 5
- 6
- 7
- 8
- 9

Council\_standard.lyr

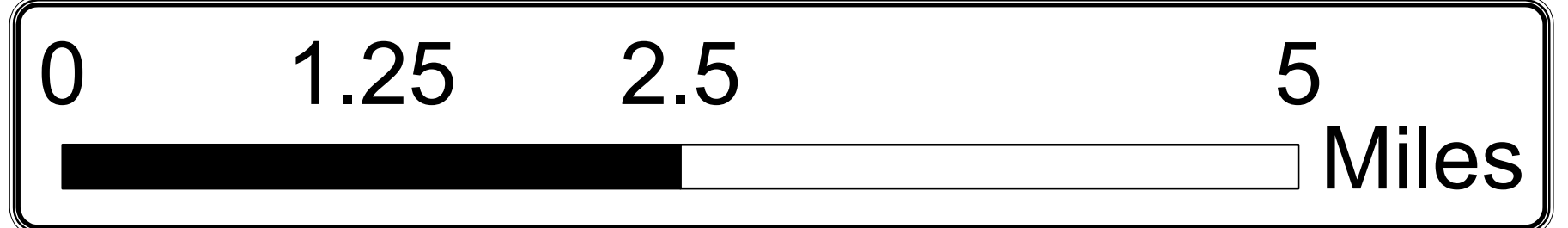


Map Prepared by City of Birmingham GIS Division



This map was prepared for graphic representation and is not to be used for conveyance. Any use of this map for such purposes shall be at the sole risk of the person or entity using it. The City of Birmingham makes no warranty, expressed or implied, as to the accuracy of the information represented herein.

Council District maps developed during the 2020 reapportionment are based on Census 2020 block data. Census block data does not perfectly match the corporate limits of the City as maintained on the City's GIS mapping system. The district lines presented in the City's GIS mapping system have been adjusted to the parcel and planimetric data maintained by the Department of Planning, Engineering and Permits, and internal boundaries are adjusted to center line of streets and other definable boundaries. Copies of the original census-block based maps are available in the Office of the City Clerk.



**Birmingham Online Mapping**  
Internet (Public Access)  
<https://gisweb.birminghamal.gov/>

J:\Pathname\path\name\maps\mapname.mxd