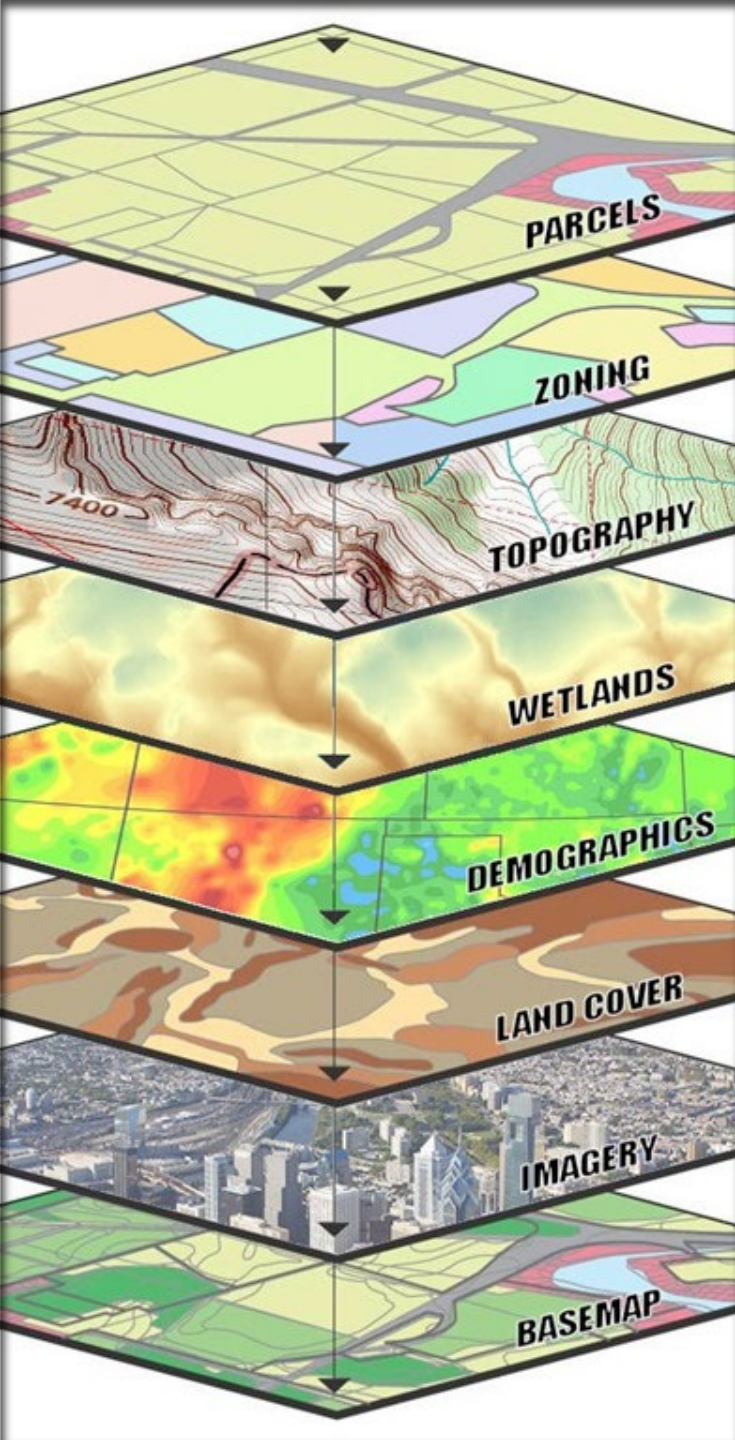




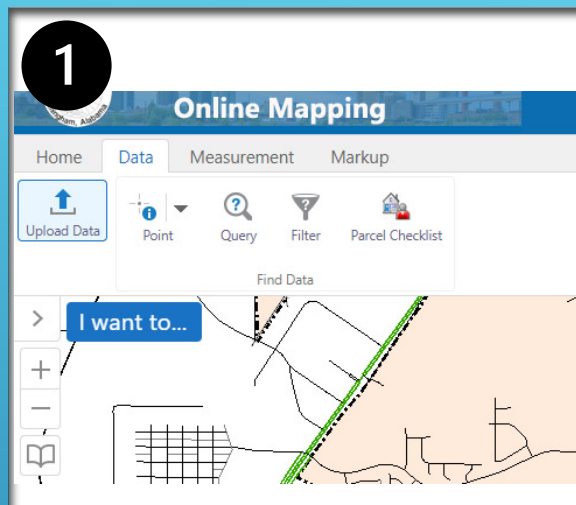
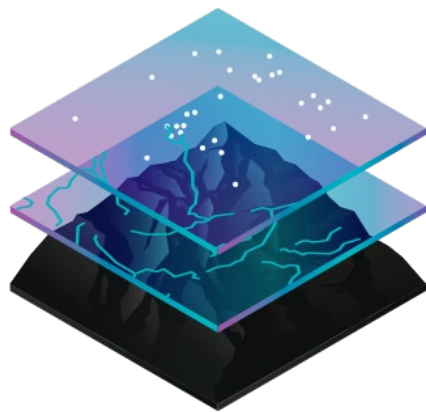
UPLOAD EXTERNAL DATA TO GISWEB



GISWeb includes dozens of layers of Geographic Data, yet the user may want to add additional data.

This can be done with the Add Data Button on the Toolbar.

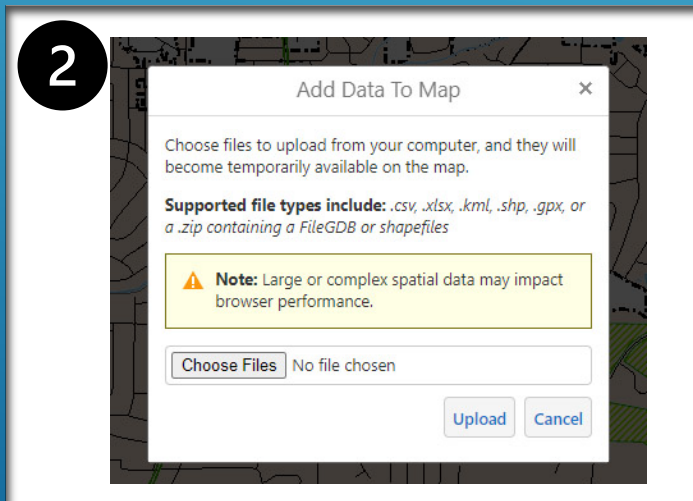
The steps outlined here will show you how to add a shapefile or a KML file to GISWeb



STEPS TO ADD YOUR DATA TO GISWEB

1. Navigate to the Upload Data Tool on the Data tab of the Toolbar
2. Click on "Choose Files" to upload the files on your system

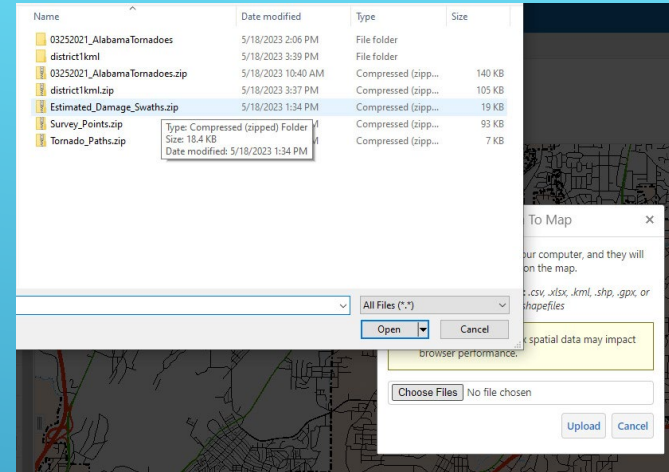
Note: In order to keep the spatial reference for shapefiles, it is recommended that you put all associated files into a ZIP file.



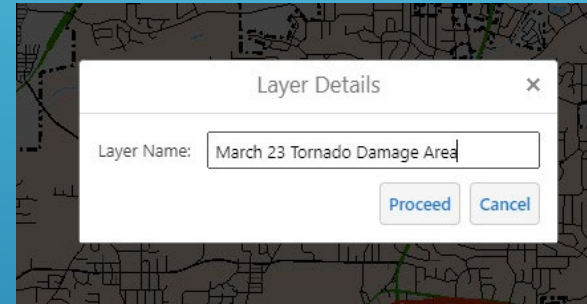
STEPS TO ADD YOUR DATA TO GISWEB

3. Select your file to upload and click upload.
4. In the Layer Details window, specify the layer name that you want displayed in the map
5. Symbolize your layer(s)

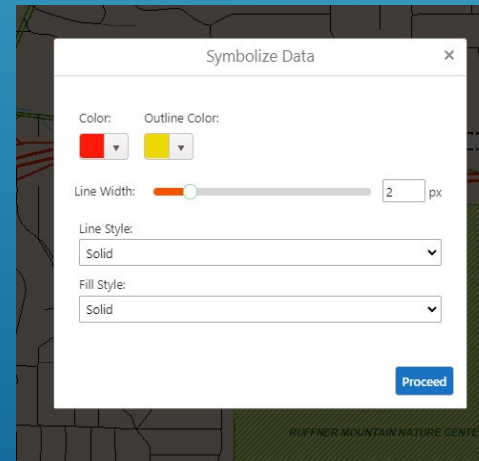
3



4



5



DATA ADDED

- ▶ Data is added and displayed on the map.
- ▶ It will appear at the top of the table of contents.
- ▶ Use the slide next to the layer name to adjust the transparency
- ▶ Click the arrow to view more options.

City of Birmingham
Official Seal
Birmingham, Alabama
Online Mapping

Home Data Measurement Markup


Upload Data Point Query Filter Parcel Checklist

Find Data

Layers

I want to...

Filter Layers... Filter

-  March 23 Tornado
- Damage Area
- EssentialsPublic (Map Service)
- Political Boundaries
- Buildings/Transportation
- Parcel and Land Management
- Natural Features
- Planning/Zoning
- Township/Range
- Contours
- Street Centerline
- CityLimitOptionsforimagery (Map Service)
- City Limits (use with Imagery)

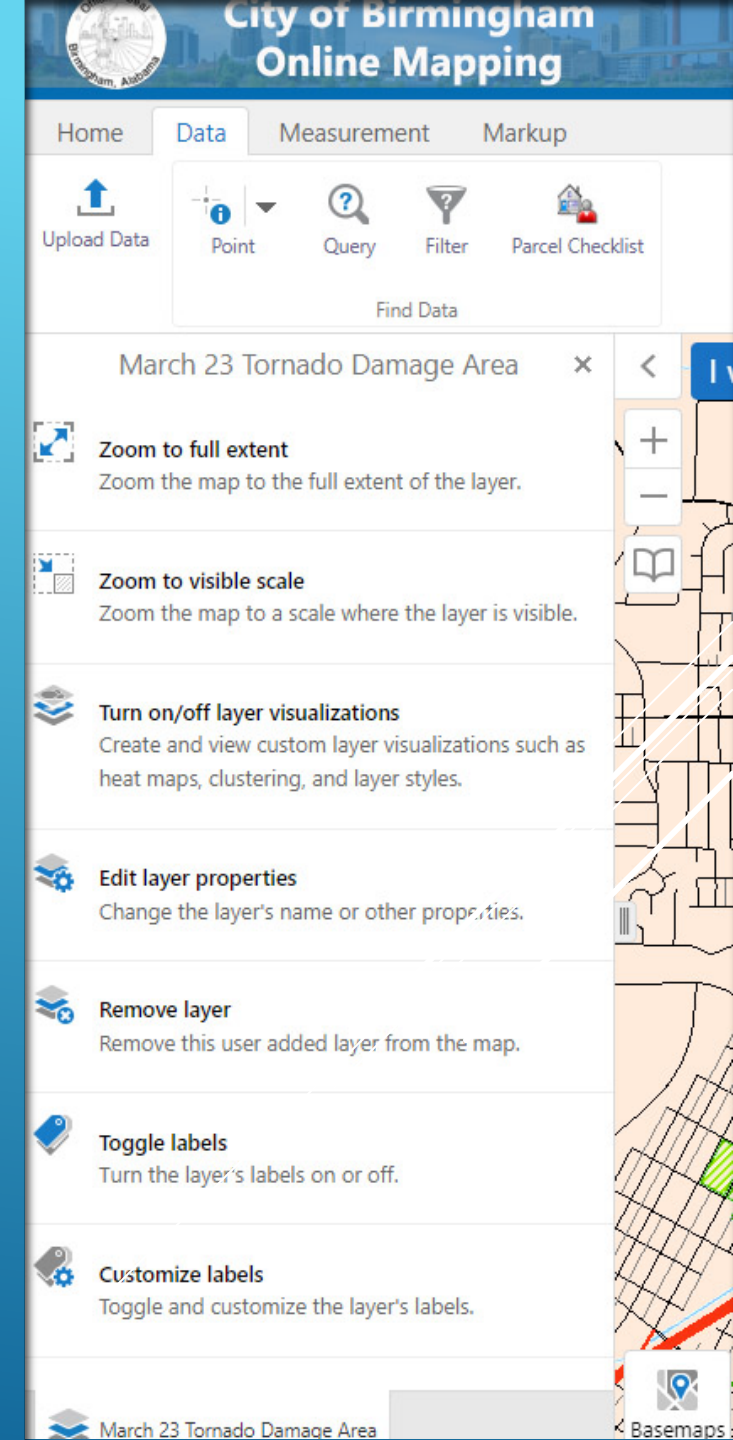
ADDITIONAL OPTIONS

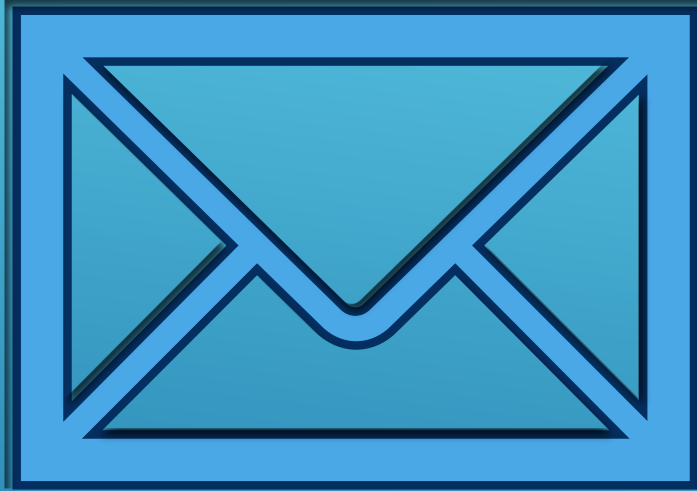
Additional functionality is available here.

- ▶ Turn on/off layer visualizations – adjust symbology for your layer
- ▶ Edit layer properties – allows access to properties that control how the layer interacts with the map
- ▶ Customize labels – allows the user to create labels from the attributes in the uploaded data

These same instructions work for KML files.

Refer to additional topics for mapping your address data.





Questions?

Reach out to

COBGISsupport@birninghamal.gov

[HTTPS://GISWEB.BIRMINGHAMAL.GOV](https://gisweb.birminghamal.gov)